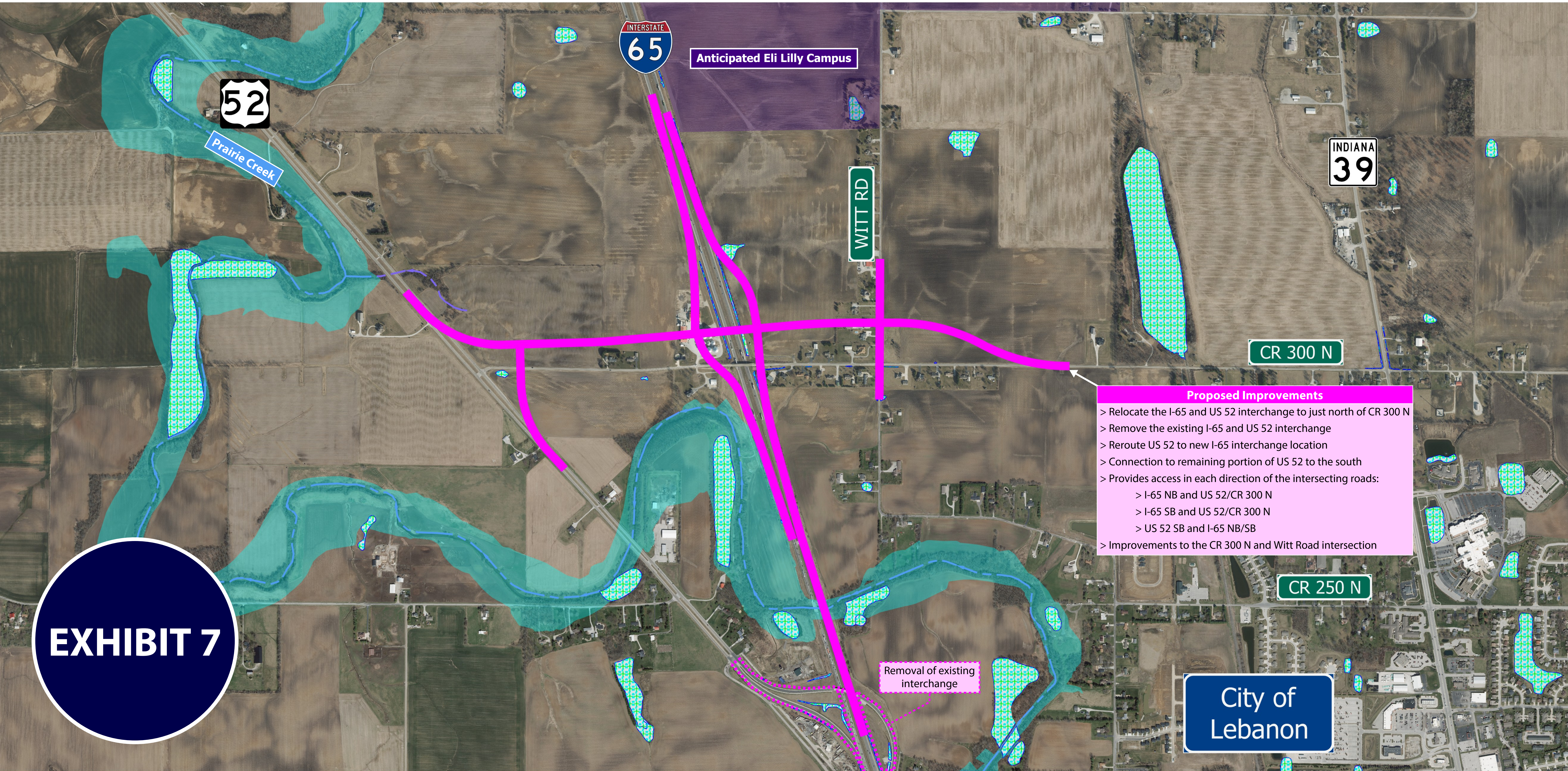


# Conceptual Alternative 7: I-65 and CR 300 N, Offset 0.07 Mile North

December 15, 2022  
DRAFT - NOT FOR CONSTRUCTION

- Conceptual Alternative 7
- Stream
- Wetland
- Floodplain



**EXHIBIT 7**

I-65 and US 52 Interchange Improvement (DES 2200176)

INDOT Crawfordsville District  
Boone County, Lebanon, Indiana

0' 500'

